

# SHARP

# AQUOS

Quattron Pro

## SHARP BIG AQUOS

**SHARP-ROXY SALES & SERVICES COMPANY (M) SDN. BHD.** (8394-W)  
No. 1A, Persiaran Kuala Langat, Section 27, 40400 Shah Alam, Selangor Darul Ehsan, Malaysia.  
Product Enquiry: 1800 2 AQUOS (27867) TOLL FREE Fax: 03-5102 5370 Email: productinfo@my.sharp-world.com  
Corporate Sales Enquiry: Tel 03-5102 5267 Fax: 03-5102 5312 Email: 828@my.sharp-world.com  
Service Enquiry: 1800 888 678 (TOLL FREE)

Dealer's stamp:

201604\_VI\_5K



[www.sharp.com.my/aquos](http://www.sharp.com.my/aquos)



## REALITY IS HERE

With

# 8K

RESOLUTION\*



Google Cast

androidtv



Android TV, Google Cast, Google Play and other marks are trademarks of Google Inc.  
The Android robot is reproduced or modified from work created and shared by Google and used according to terms described in the creative commons 3.0 Attribution License.  
\*1 The result of our laboratory testing using a test pattern with 7,680 x 4,320 pixels. The product is not using an 8K LCD panel. 8K picture (video) from an external input, cannot be played back and 8K broadcasting cannot be received.



# 8K RESOLUTION

## リアリティの世界に浸る

### IMMERSE INTO A NEW REALITY

## AQUOS XU Series

### The World's First\*<sup>1</sup> 8K-Upconverter

A new reality comes along with the stunning detail in pictures that will vow a remarkable resolution revolution. In combination of the world's first\*<sup>1</sup> 8K-Upconverter and unique 4 Primary Colour Panel Technology\*<sup>2</sup>, you can now see beautiful pictures in your eyes with the experience of 8K Resolution\*<sup>3</sup>. The new astonishing discovery reveals the way you experience.



\*<sup>1</sup> First in B to C 4K TVs as of Jan. 2016.  
 \*<sup>2</sup> Unlike the conventional 3-colour display method, this is a proprietary SHARP method for reproducing colours on a display.  
 \*<sup>3</sup> As the result of our laboratory testing using a test pattern with 7,680 x 4,320 pixels. The product is not using an 8K LCD Panel. 8K picture (video) from external input cannot be played back and 8K broadcasting cannot be received.  
 \*<sup>4</sup> The CES Innovation Awards are based upon descriptive materials submitted to the judges. CEA did not verify the accuracy of any submission or of any claims made and did not test the item to which the award was given.

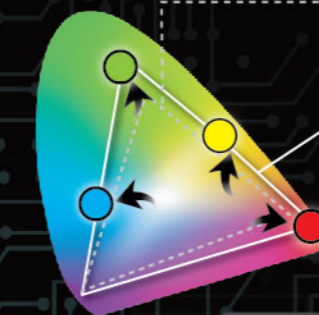
\* 4

# The world's first 8K-Upconverter produces the detail in 8K Resolution\*

## Detail 8K Resolution\*

8K Resolution and 8K-Upconverter are embedded. With our unique Quattron Pro, 4K - 4 Primary Colour Panel Technology produces 8K Resolution. Never-Seen-Before picture quality is now here for you to experience the best detailed picture with better sense of depths and immersion.

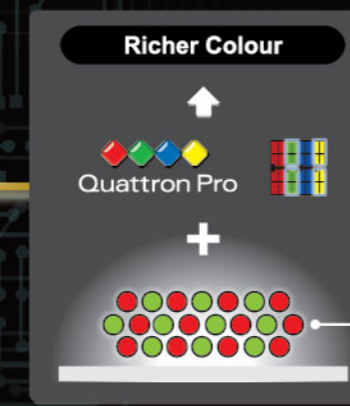
\*As the result of our laboratory testing using a test pattern with 7,680 x 4,320 pixels. The product is not using an 8K LCD Panel. 8K picture (video) from external input cannot be play backed and 8K broadcasting cannot be received.



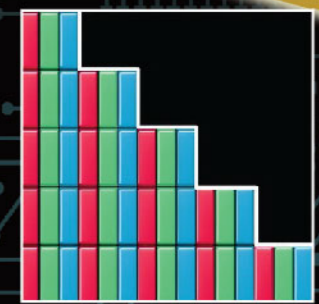
## Colour Rich Colour Pro

The new LED light device and 4 Primary Colour Panel Technology expand 40% wider than conventional TV by making Green, Red and Yellow colour reproduction to be richer.

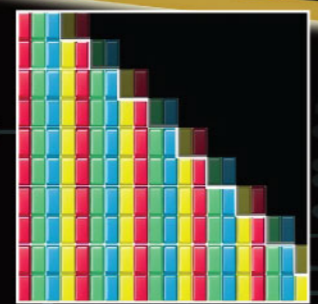
\*Compare to our conventional model (LC-50LE275X)



Newly added Green + Red Phosphor in the backlight



Resolution (Brightness peak) 4 times



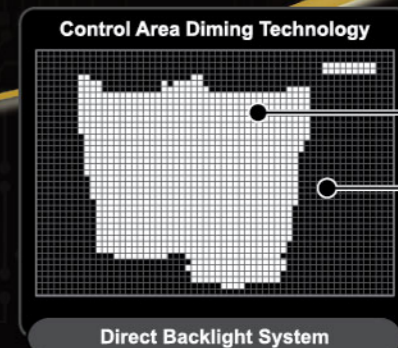
R G B  
Conventional  
4K Ultra HD

R G B Y  
4K Ultra HD + Quattron Pro

8K Resolution

## Contrast Ultra Dynamic Range Pro

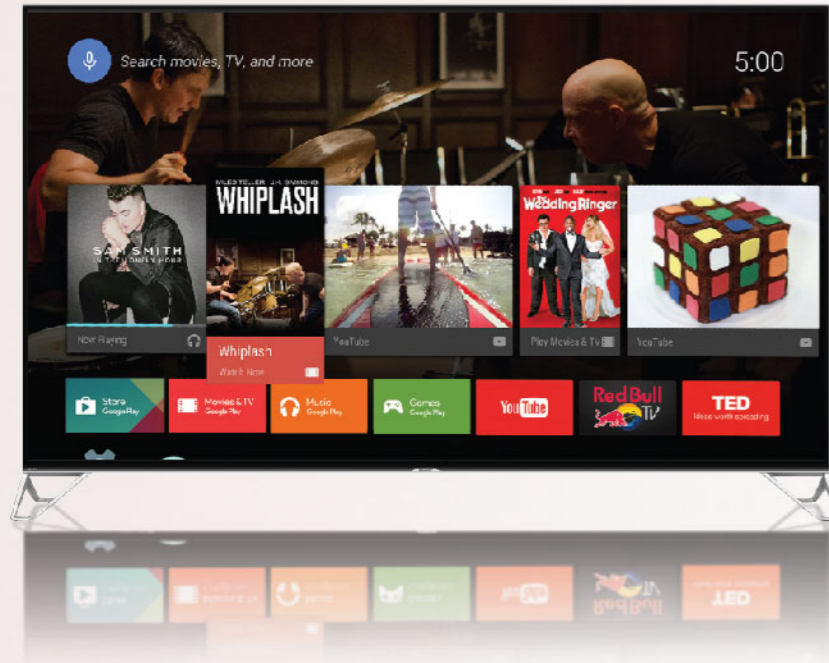
X8-Master Engine Pro and the new direct LED backlight system provide a better quality of picture with enhanced contrast by making the dark area of the picture becomes darker and the bright area becomes brighter.



Original Source

Backlight Area Control

# Android TV™ Entertainment tailored for you.

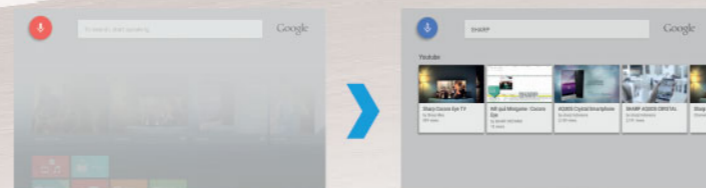
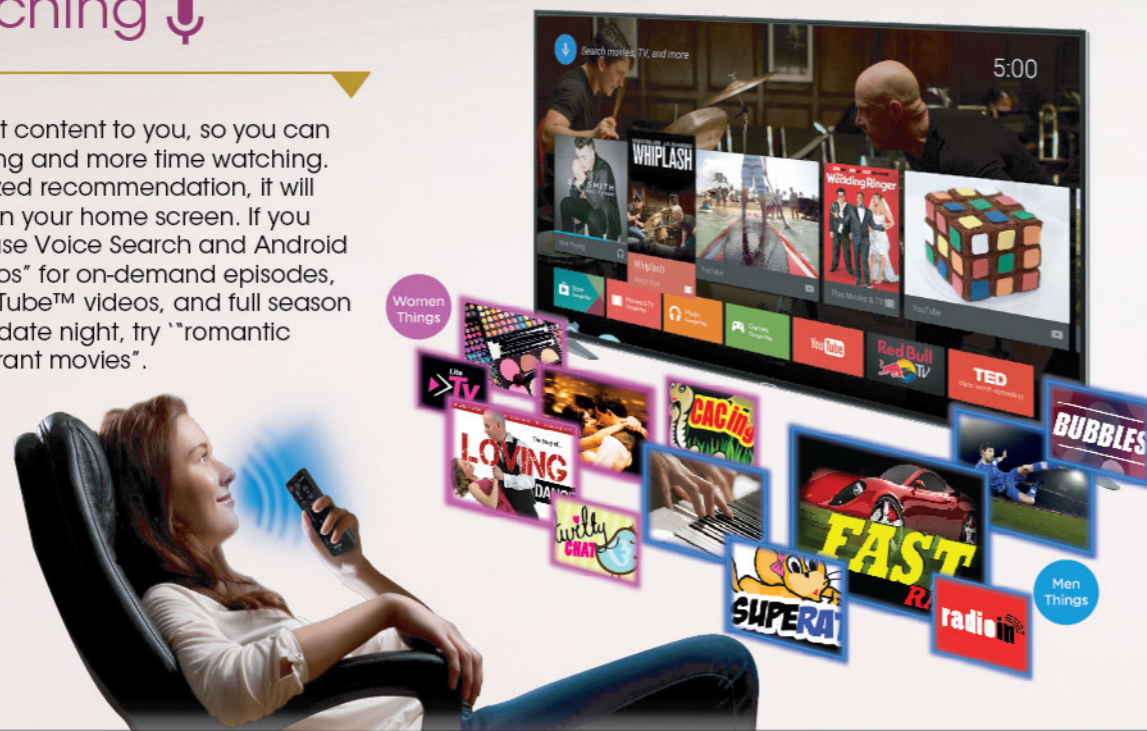


## Your Favourite Content and App ♥

Watch hit shows, timeless movies and viral videos from Google Play™ and your favourite apps. If your app doesn't have what you are looking for, you can rent or buy thousands of blockbusters, classics and award-winning shows from Google Play.

## Less Browsing, More Watching 🗣️

Android TV brings great content to you, so you can spend less time browsing and more time watching. Just pick the personalized recommendation, it will appear automatically in your home screen. If you know what you want, use Voice Search and Android TV will find "the Sopranos" for on-demand episodes, behind-the-scenes YouTube™ videos, and full season on Google Play. Or for date night, try "romantic comedies" or "Hugh Grant movies".



## Android™ Gaming on The Big Screen 🎮



Introducing console-style Android Games on your TV with a gamepad. Immerse yourself in arcade racing, 2D side-scrollers, 3D battles, and beautiful adventures. Or play a quick round of your favourite casual game. Whether you explore alone or compete online to earn achievements, Android TV offers a new way to play Android games on your phone, tablet or TV.  
\*Apps in TV and smart devices maybe vary depends on compatibility.

## Google Cast™ Built In 📺

Google Cast lets you cast movies, shows and photos from your Android or iOS phone device or laptop to your TV. Streaming contents syncs across your phone, tablet and Android TV device so you can start a movie on your TV, then finish in bed on your tablet. And controlling Android TV is easy: use the elegant remote to pick content and search with your voice. Or, in a pinch, use the remote app on your Android phone or Wear watch.





## Ultra-Sleek Aluminium Design

The solid loop design unifies the aluminium frame and stand to make the presence of the sense of posh and lightweight. The premium finishing of this model will affix a bit of edge in the living room.

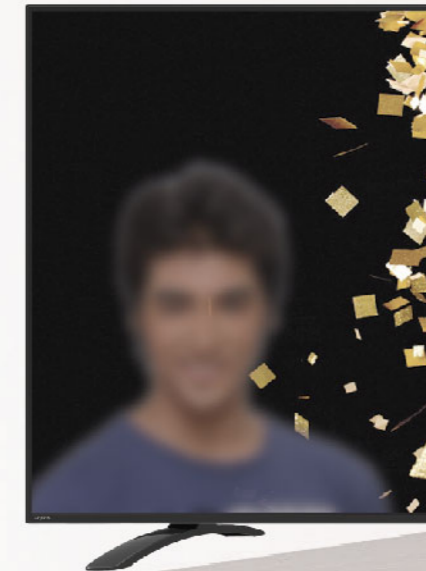
The stylish loop stand is able to be adjusted to the inner part of the TV. Stand can be moved further inner position 40cm from each side.\*

\*Only applicable for LC80XU930X

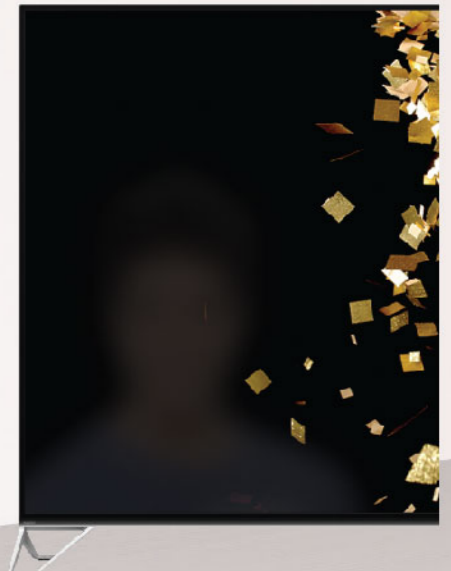
## N-Black Panel

N-Black Panel adopts new materials to give low reflection but also with clear colour reproduction, especially for rich black, can be realized.

\*Only applicable for LC80XU930X



CONVENTIONAL CLEAR PANEL



SHARP N-BLACK PANEL

Reflection	High	Low
Colour	Dim	Bright
Contrast	Low	High



## Simple, Smooth and Handy

A Bluetooth enabled remote control is exactly what you need. Touch pad enhances enjoyment of gaming on a big screen. One flick and slide in TV menu. In conventional remote control, one press on the Netflix or HOME screen button to access Movies, Search, Recommendation, Apps, Games, Inputs and Settings.

930X 80"

70" 830X



80XU930X

70XU830X

Core Ultra HD Digital TV With Latest Smart OS

Core Ultra HD Digital TV With Latest Smart OS

- AQUOS Quattron Pro - 8K Experience
- Equivalent of 8K Resolution Panel & 8K Up-Converter
- Rich Colour Plus
- Ultra Dynamic Range Pro
- Adopt the latest Smart OS
- Variety contents free from other device cooperation
- Input/Output terminal Support 4K latest standards
- Smart features can be fully utilized with touch-pad & voice-search function

- AQUOS Quattron Pro - 8K Experience
- Equivalent of 8K Resolution Panel & 8K Up-Converter
- Rich Colour Plus
- Ultra Dynamic Range Pro
- Adopt the latest Smart OS
- Variety contents free from other device cooperation
- Input/Output terminal Support 4K latest standards
- Smart features can be fully utilized with touch-pad & voice-search function

KEY FEATURES:

KEY FEATURES:

OTHER FEATURES:

OTHER FEATURES:

• Android TV, Google Cast, Google Play and other marks are trademarks of Google Inc.  
 • The result of our laboratory testing using a test pattern with 7,680 x 4,320 pixels. The product is not using an 8K LCD panel. 8K picture (video) from an external input, cannot be played back and 8K broadcasting cannot be received.

• Android TV, Google Cast, Google Play and other marks are trademarks of Google Inc.  
 • The result of our laboratory testing using a test pattern with 7,680 x 4,320 pixels. The product is not using an 8K LCD panel. 8K picture (video) from an external input, cannot be played back and 8K broadcasting cannot be received.

630X 65" 58" 50"

65" 58" 50" 40" 330X



- Ultra HD with LED Backlight
- 4K Master Engine Pro
- Powered by Android TV™
- 1080/24P signal inputs for film frame rates just like in a theater
- Faster Processing Speed With Quad-Core Processor
- Smart Remote Control With Touch Pad
- Google Play™ Store

- Teletext
- Mobile High-Definition Link (MHL) Connection to Smartphone
- Enhanced TV viewing enjoyment using USB for music, photos and movies
- Selectable Multilingual On-Screen Display (English/Simplified-Chinese/Arabic/Persian/French/Thai /Portuguese/Vietnamese/Russian/Spanish/Malay/Indonesian)

- Ultra HD with LED Backlight
- 4K Master Engine
- 1080/24P signal inputs for film frame rates just like in a theater
- PHOTO FRAME mode for photo viewing enjoyment
- Enhanced TV viewing enjoyment using USB for movies, music and photos

- EASY Colour Adjustment mode
- Mobile High-Definition Link (MHL) Connection to Smartphone
- Teletext
- Selectable Multilingual On-Screen Display (English/Simplified-Chinese/Arabic/Persian/French/Thai /Portuguese/Vietnamese/Russian/Spanish/Malay/Indonesian)

KEY FEATURES:

KEY FEATURES:

OTHER FEATURES:

OTHER FEATURES:

\* Android TV, Google Cast, Google Play and other marks are trademarks of Google Inc.  
 \* Colour of UE630X stand is subject to be changed without any notice.

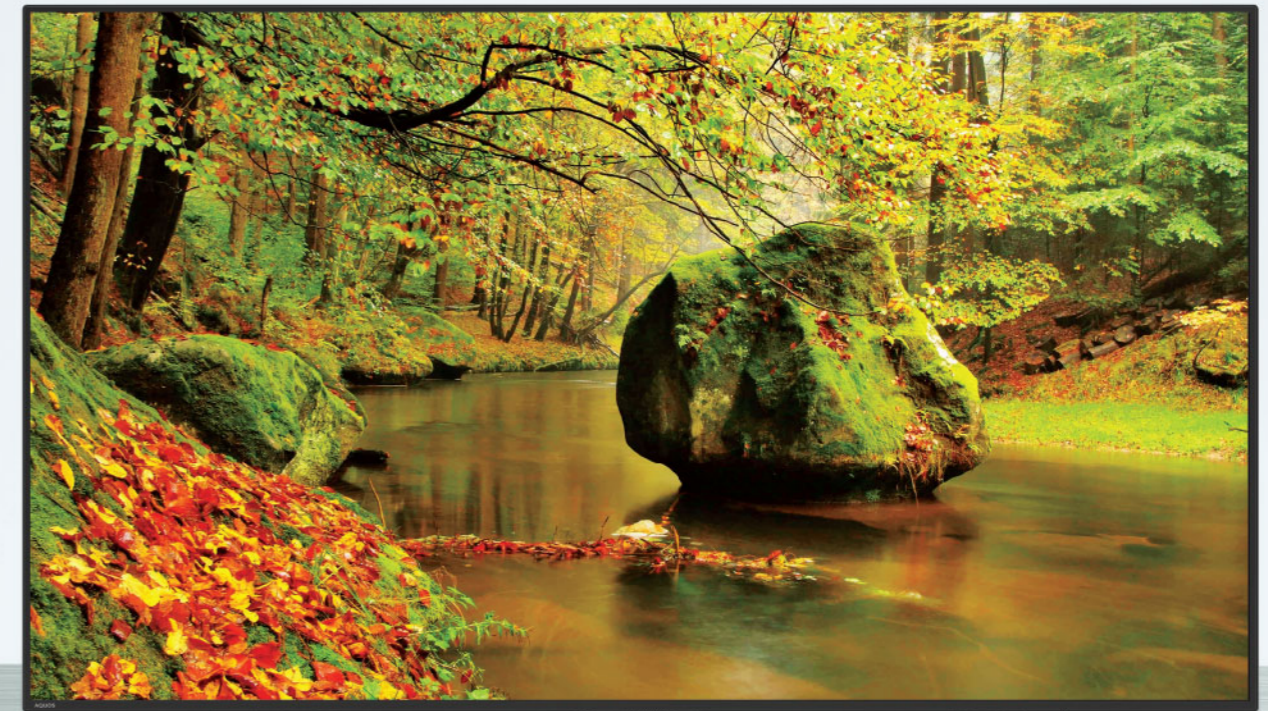
\* Colour of UA330X stand is subject to be changed without any notice.

280X 40" 32"

65" 58" 50" 40" 32" 275X



40LE280X



65LE275X

- Full-HD LCD Panel (only 40")
- Sound Reflect Design
- Rich detail and superb stereo imaging
- Super ECO Mode
- Optimized energy efficient screen display
- MHL
- Simple connection with Smartphone
- HDMI terminal for effortless digital connectivity with AV equipment
- Enjoy TV viewing by using USB for music, photos and movies
- PHOTO FRAME mode for enjoyment viewing photo

KEY FEATURES:



OTHER FEATURES:



7 SHIELDS

We care about customers safety

- All of the shields are confirmed by testing which goes beyond the normal standard

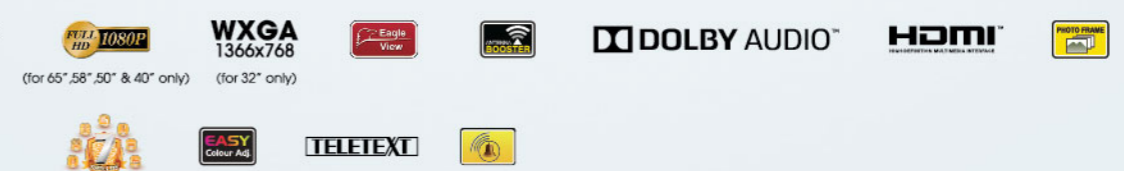


- Full-HD LCD panel with LED backlight
- AQUOMOTION LITE (except 65")
- Eagle view makes clear image especially for moving image
- 1080/24P signal inputs for film frame rates just like in a theater
- PHOTO FRAME mode for photo viewing enjoyment
- EASY Colour Adjustment mode
- HDMI terminal for simple digital connection to AV equipment
- Inserting USB memory sticks for music, photos and videos

KEY FEATURES:



OTHER FEATURES:



\* Colour of LE275X stand is subject to be changed without any notice.



265M 40" 32"  
260M 32"

40" 185M



- Full-HD LCD panel (40" only)
- Eagle view makes clear image especially for moving image
- PHOTO FRAME mode for photo viewing enjoyment
- Super Eco mode for ecological operation
- EASY Colour Adjustment mode
- HDMI terminal for simple digital connection to AV equipment
- Inserting USB memory sticks for music, photos and videos

- Full-HD LCD Panel
- Sound Reflect Design
- Rich detail and superb stereo imaging
- Super ECO Mode
- Optimized energy efficient screen display
- HDMI terminal for effortless digital connectivity with AV equipment
- Enjoy TV viewing by using USB for music, photos and movies
- PHOTO FRAME mode for enjoyment viewing photo
- Convenient operation with Reminder feature

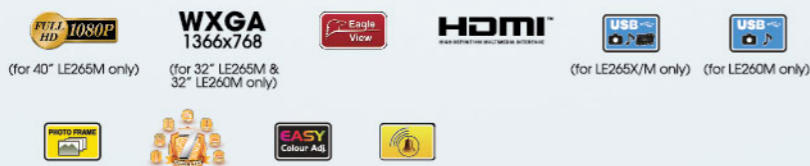
KEY FEATURES:



KEY FEATURES:



OTHER FEATURES:



OTHER FEATURES:



\* All features above are features for all LE265X, LE265M and LE260M models unless certain models or sizes have been stated below the feature logo.

180M 32"

24" 155M  
24" 150M



- Sound Reflect Design
- Rich detail and superb stereo imaging
- Super ECO Mode
- Optimized energy efficient screen display
- HDMI terminal for effortless digital connectivity with AV equipment
- Convenient operation with Reminder feature

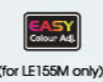
KEY FEATURES:



OTHER FEATURES:



KEY FEATURES:



OTHER FEATURES:



- Narrow bezel LCD screen
- WXGA LCD panel with LED backlight
- Inserting USB memory sticks for music, photos and videos
- Built-in ANTENNA BOOSTER
- HDMI terminal for simple digital connection to AV equipment
- Timer feature

\* All features above are features for all LE155M and LE150M models unless certain models or sizes have been stated below the feature logo.

**Green** is the answer.



**Making A Tangible Contribution To Environmental Protection**

Sharp wants to be a pioneer in this area and is committed to the protection of the natural re-sources on which our lives are based. So we want to make a contribution to the reduction of CO2 emissions worldwide when we are manufacturing products that generate and save energy. Already in 2005 Sharp could officially prove that its TVs are environmentally advanced.

**Energy Efficiency**

With our new series, Sharp has shown how easy energy saving can be. The models are equipped with advanced energy saving features, which helps to reduce the power consumption even for big screen.

\* Applicable to selected models only & subject to change according to government energy efficiency policy.  
\* Eco features are subject to change without prior notice.



**\*SAVE OVER 25% ENERGY WITH 5-STAR ENERGY EFFICIENCY TESTED BY SIRIM AND APPROVED BY ENERGY EFFICIENT.**

**7 Shields Protection**

All SHARP AV products passed the strict Japanese quality standard.

SHARP TV is proven to have safe operation and high endurance under various circumstances. Now you can enjoy your viewing experience from good quality TV that is protected by 7 Shields.



assure safe product operations & endurance

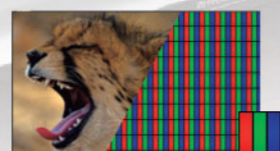


\* Images are for illustrative purposes only.

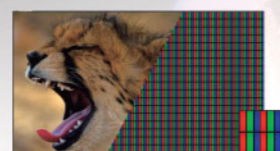


## Legendary AQUOS Picture Quality Now 4K ULTRA HD RESOLUTION

58UE630X



Full HD LCD panel (1,920 x 1,080)  
with 2.7 million pixels



4K Ultra HD LCD panel (3,840 x 2,160)  
with 8.29 million pixels

### 4K ULTRA HD LCD PANEL

With the 4K Ultra HD LCD panel, four times the pixels resolution of Full HD\*, you will see perfectly precise detail.

\* Compared to Full HD (1,920 x 1,080 pixels)



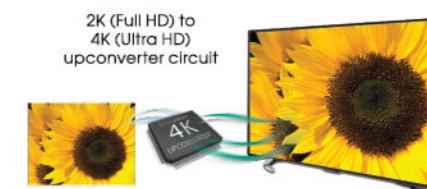
Low-uniformity screen



High-uniformity screen

### HIGH UNIFORMITY SCREEN

The high uniformity brightness of SHARP's light control technology enables faithful expression from original source.



### 4K ULTRA HD UPCONVERTER

A newly developed 4K Ultra HD upconverter analyzes and enhances video content with lower resolution (i.e. 1,080p) to produce a more detailed 4K Ultra HD image.

Full HD images, such as Blu-ray discs, or digital broadcasts, are reproduced with sharper details and more vivid colours.

\* Colour of UE630X stand is subject to be changed without any notice.  
\* Images are for illustrative purposes only.



HT-SB602

- Total RMS 310W
- Designed for 60" LCD TV and above
- Wireless Music Streaming via Bluetooth
- One Touch Connection via NFC
- Wireless Subwoofer
- 3D Audio (Arnis 3D Sound Solution)
- Audio Return Channel (ARC)
- HDMI Out X 1, HDMI In X 2
- Optical In
- Audio In 3.5mm Terminals
- Wall Mountable



HT-SB603

- Total Output Power : RMS 310W (80W/ch + 150W), 2.1ch
- Supports 4K Video format pass through via HDMI
- 2-Way remote control with built-in LCD display
- Music streaming via BLUETOOTH wireless technology with One Touch NFC connect
- Simple cable connection through HDMI (Audio Return Channel)
- Sound Bar Design Match with 60" AQUOS LCD TV
- Easy Setup Sound Bar with wireless subwoofer
- 3D Audio ( 3D Sound Solution )

MICRO COMPONENT SYSTEM



Model Name	XL-LS703B
NFC	✓
Bluetooth	✓
AOA	✓
USB	✓
CD	✓
Tuner	✓

XL-LS703B

- Total RMS 50W (25W/ch)
- Bluetooth connectivity with NFC support
- MP3 Play via USB
- FM Radio
- Bass/Treble adjust & X-BASS



**4K Connect Ready**  
With compatible range of 4K standards, 4K content can be seen through devices via HDMI, MHL, or USB.



**4K Ultra HD**  
Enjoy the 4K Ultra HD viewing experience with precise detailed, high uniformity brightness and vivid colour images.



**7 Shields**  
Enjoy your viewing experience from good quality TV that is protected by 7 Shields.



**Android TV™**  
Introducing Android TV: movies, TV shows and games, perfectly tailored for you. Android TV makes your TV smarter.



**Antenna Booster**  
The booster can be set on or off separately for each channel to match the channel's specific conditions, providing a clear image with exciting sound.



**AQUOMOTION LITE 200/240**  
LED Backlight shuttering reduces motion blur and improves transition in fast motion.



**AQUOMOTION 200/240**  
AquaMotion converts 50-Hz images to 100 Hz and 60-Hz images to 120 Hz, doubling the frame display speed for improved picture clarity and smoothness. Plus, AquaMotion 200/240 uses scanning backlight technology to perform 100/120-Hz control, which results in reduced afterimages and natural reproduction of high-speed pictures.



**AQUOMOTION 1000/1200**  
In addition to 200/240 Hz quadruple-frame technology, controlling the liquid crystal panel drive and LED backlight shuttering reduces motion blur and improves transition in fast motion.



**Bass Enhancer Powered by SRS Labs, Inc.**  
The bass enhancer system creates powerful bass at low frequencies befitting a large display by using an advanced digital system.



**Bluetooth**  
Connect TV and devices wireless with quality Bluetooth.



**Clear Picture Processing**  
Reproducing a clearer picture than original by compensating various noise types in the picture signal of normal broadcasts or any other low resolution contents.



**Digital Video Broadcasting-2nd Generation Terrestrial**  
The world's most advanced digital terrestrial television (DTT) system, offering more robustness, flexibility and 50% more efficiency than any other DTT system.



**Dolby Audio-Dolby Digital Plus**  
One of Dolby Audio technologies (Dolby Digital Plus) enhance quality of sound and functionality. It can support increased bitrates at high quality with more audio channels to provide superior surround sound entertainment for digital high-definition TV broadcasts, optical disc media and online content.



**DTS 2.0+ Digital Out™**  
DTS 2.0+Digital Out denotes the dual ability to pass the DTS encoded digital bitstream to an external DTS decoder for playback as well as fold down the digital surround soundtrack for playback in a 2-channel environment through analog outputs.



**Eagle View**  
Controlling the backlight, the motion blur in the center is reduced.



**EASY Colour Adjustment**  
A colour chart is displayed on the viewing image for viewers to adjust their preferable colours while seeing displayed image.



**E-touch Remote**  
Experience the simplest touch remote with your fingertip to perform quick and intuitive operation.



**Google Cast™**  
Cast your favourite entertainment from your Android or iOS mobile device to your TV.



**Google Play™**  
Google's official store app for Android apps, games and other content downloads for your Android TV.



**HDMI High-Definition Multimedia Interface**  
HDMI is an interface for digital audio/video signals. HDMI is compatible with the HDCP copy protection standard.



**Internet**  
View the web content from all over the world through the Internet.



**LCD Panel Made in Japan**  
The models used high quality LCD Panel made in a plant located in Japan.



**Mobile High-definition Link (MHL)**  
Industry standard for a mobile audio/video interface for direct connection mobile phones and other portable consumer electronics (CE) devices to high-definition televisions (HDTVs) and displays.



**Optical Picture Control (OPC)**  
Power consumption during operation is automatically reduced by controlling the backlight brightness according to the room lighting conditions.



**Photo Frame**  
Photo Frame mode enables fast access to view a photo slideshow.



**Quadcore Processor**  
Enjoy excellent performance with fastest processing speeds that allows to perform multiple tasks simultaneously without delay.



**Quattron Pro**  
Quattron Pro, with enhanced subpixel processing performance, enables reproduction of precise and smooth outlines.



**SDHC**  
See photos and videos taken with high resolution camera, inserting directly on the SD card slot, supporting full SDHC.



**SRS TruSurround HD™**  
SRS TruSurround HD™ creates an immersive, feature-rich surround sound experience from two speakers, complete with rich bass, high-frequency detail and clear dialogue.



**Subwoofer**  
An exclusive speaker system for low tone that normal speakers cannot fully represent.



**TELETEXT**  
Teletext information is broadcast in the vertical blanking interval between image frames in a broadcast television signal.



**Timer**  
A preset timer allows you to set a reminder or turn off the TV automatically.



**Ultra Slim Bezel**  
A slim TV design provides a significantly thin bezel, creating a more immersive viewing experience.



**USB Multimedia Player**  
View photos and play music and video from USB memory.



View photos and play music from USB memory.



**Wallpaper Mode**  
When the TV is turned off, Wallpaper mode lets you virtually display any image that you choose from USB memory (three pictures default) on the AQUOS LED screen at a reduced light level.



**WiFi certified**  
WiFi certified products which meet industry-agreed standards for interoperability, security, and a range of application specific protocols.

• The terms HDMI and HDMI High-Definition Multimedia Interface, and the HDMI Logo are trademarks or registered trademarks of HDMI Licensing, LLC in the United States and other countries. • Dolby, Dolby Audio and the double-D symbol are registered trademarks of Dolby Laboratories. • SRS is a trademark of SRS Labs, Inc. • The Bluetooth® word mark and logos are registered trademarks owned by Bluetooth SIG, Inc., and any use of such marks by SHARP is under license. Other trademarks and trade names are those of their respective owners. • DTS, DTS-HD, the Symbol, & DTS or DTS-HD and the Symbol together are registered trademarks of DTS, Inc. © DTS, Inc. All Rights Reserved. • Java and all Java-based trademarks and logos are trademarks or registered trademarks of Oracle and/or its affiliates. • MHL, the MHL logo, and Mobile High-definition Link are trademarks or registered trademarks of MHL, licensing LLC. • DVB and M-HP are registered trademarks of the DVB Project. • Android TV, Google Cast, Google Play and other marks are trademarks of Google Inc. • SDHC Logo is a trademark of SD-3C, LLC. • The WiFi CERTIFIED Logo is a certification mark of the WiFi Alliance. The WiFi Protected Setup Mark is a mark of the WiFi Alliance.

CATEGORIES		PREMIUM		ADVANCED		
SERIES		XU		UE		
MODEL NAME		XU930X	XU830X	UE630X		
SIZE		80"	70"	65"	58"	50"
PICTURE	4K ULTRA HD					
	QUATTRON PRO					
	AQUOMOTION					
	3D					
SMART	PROCESSOR					
	PLATFORM					
	APP STORE					
	WEB BROWSER	(TV download Apps)	(TV download Apps)	(TV download Apps)		
AUDIO	OUTPUT POWER	10W+10W, 15W (Subwoofer)	10W+10W, 15W (Subwoofer)	10W+10W		
	SURROUND					
CONVENIENCE	COCORO EYE					
	USB PLAYBACK					
CONNECTIVITY	DIGITAL TUNER					
	MHL					
	SMART MIRRORING					
	BLUETOOTH					
	WIFI CERTIFIED					
	HDMI					
	USB	USB X3 (USB 3.0 X 1, USB 2.0 X 2)	USB X3 (USB 3.0 X 1, USB 2.0 X 2)	USB X3 (USB 3.0 X 1, USB 2.0 X 2)		
TERMINALS	POWER SUPPLY	110-240V, 50/60Hz	110-240V, 50/60Hz	110-240V, 50/60Hz	110-240V, 50/60Hz	110-240V, 50/60Hz
	POWER CONSUMPTION (APPROX.)	454W (0.4W Standby)	359W (0.4W Standby)	239W	200W	171W
	DIMENSIONS WITHOUT STAND (MM) (W x H x D)	1809 x 1049 x 106	1564 x 910 x 91	1,457 x 847 x 65	1,298 x 763 x 85	1,123 x 656 x 82
	DIMENSIONS WITH STAND (MM) (WxHxD)	1809 x 1139 x 428	1564 x 989 x 361	1,457 x 882 x 374	1,298 x 789 x 305	1,123 x 685 x 305
	NET WEIGHT WITHOUT / WITH STAND (KG) (APPROX.)	56 / 59	39 / 41.5	36.5 / 39.5	28.0 / 30.0	22.0 / 24.0
PAGE	10	11	12			

Android TV, Google Cast, Google Play and other marks are trademarks of Google Inc. The Android robot is reproduced or modified from work created and shared by Google and used according to terms described in the creative commons 3.0 Attribution License.  
 \*1 The result of our laboratory testing using a test pattern with 7,680 x 4,320 pixels. The product is not using an 8K LCD panel. 8K picture (video) from an external input, cannot be played back and 8K broadcasting cannot be received. Compliance to general DVB-T/12 systems are vary across countries.

• Except protruding parts. • The HDMI logo and 1080P qualifier logo are trademarks of DIGITALEUROPE. • Dolby and the double-D symbol are registered trademarks of Dolby Laboratories. • HDMI, the HDMI logo and High-Definition Multimedia Interface are trademarks or registered trademarks or registered trademarks of HDMI Licensing LLC in the United States and other countries. • The Wi-Fi CERTIFIED Logo is a certification mark of Wi-Fi Alliance. • The Bluetooth® word mark and logos are registered trademarks owned by Bluetooth® SIG Inc. and any use of such marks by Sharp is under license. • Design and specifications are current as of April 2016, but are subject to change without prior notice. • On-Mode power consumption is measured according to IEC62087 Edition 2.

CATEGORIES		ADVANCED				HOME-LOVING						
SERIES		UA				2						
MODEL NAME		UA330X				LE280X		LE275X				
SIZE		65"	58"	50"	40"	40"	32"	65"	58"	50"	40"	32"
PICTURE	4K ULTRA HD											
	QUATTRON PRO											
	AQUOMOTION											
	3D											
SMART	PROCESSOR											
	PLATFORM											
	APP STORE											
	WEB BROWSER											
AUDIO	OUTPUT POWER	10W+10W				5W+5W		10W+10W				
	SURROUND	ORIGINAL				ORIGINAL		ORIGINAL				
CONVENIENCE	COCORO EYE											
	USB PLAYBACK											
CONNECTIVITY	DIGITAL TUNER											
	MHL											
	SMART MIRRORING											
	BLUETOOTH											
	WIFI CERTIFIED											
	HDMI											
	USB	USB X1				USB X1		USB X1				
TERMINALS	POWER SUPPLY	110-240V, 50/60Hz	110-240V, 50/60Hz	110-240V, 50/60Hz	110-240V, 50/60Hz	110V-240, 50/60Hz	110V-240, 50/60Hz	110-240V, 50/60Hz	110-240V, 50/60Hz	110-240V, 50/60Hz	110-240V, 50/60Hz	110-240V, 50/60Hz
	POWER CONSUMPTION (APPROX.)	222W	183W	155W	73W	TBD	TBD	179W	106W	68W	78W	52W
	DIMENSIONS WITHOUT STAND (MM) (W x H x D)	1,457 x 847 x 65	1,298 x 763 x 85	1,123 x 656 x 82	901 x 522 x 82	905 x 537 x 78	732 x 450 x 75	1,457 x 847 x 65	1,300 x 763 x 68	1,123 x 656 x 82	910 x 525 x 92	739 x 440 x 93
	DIMENSIONS WITH STAND (MM) (WxHxD)	1,457 x 882 x 374	1,298 x 789 x 305	1,123 x 685 x 305	901 x 542 x 204	905 x 560 x 178	732 x 464 x 144	1,457 x 878 x 335	1,300 x 793 x 302	1,123 x 687 x 255	910 x 571 x 206	739 x 482 x 174
	NET WEIGHT WITHOUT / WITH STAND (KG) (APPROX.)	36.0 / 39.0	27.5 / 29.5	21.5 / 23.5	15.0 / 15.5	7.25 / 7.5	4.6 / 4.7	36.0 / 37.5	25.5 / 26.5	20.0 / 21.0	8.4 / 10.0	6.0 / 6.8
PAGE	13				14		15					

Android TV, Google Cast, Google Play and other marks are trademarks of Google Inc. The Android robot is reproduced or modified from work created and shared by Google and used according to terms described in the creative commons 3.0 Attribution License.  
 \*1 The result of our laboratory testing using a test pattern with 7,680 x 4,320 pixels. The product is not using an 8K LCD panel. 8K picture (video) from an external input, cannot be played back and 8K broadcasting cannot be received. Compliance to general DVB-T/2 systems are vary across countries.

• Except protruding parts. • The HDTV logo and 1080P qualifier logo are trademarks of DIGITALEUROPE. • Dolby and the double-D symbol are registered trademarks of Dolby Laboratories. • HDMI, the HDMI logo and High-Definition Multimedia Interface are trademarks or registered trademarks or registered trademarks of HDMI Licensing LLC in the United States and other countries. • The Wi-Fi CERTIFIED Logo is a certification mark of Wi-Fi Alliance. • The Bluetooth® word mark and logos are registered trademarks owned by Bluetooth® SIG Inc. and any use of such marks by Sharp is under license. • Design and specifications are current as of April 2016, but are subject to change without prior notice. • On-Mode power consumption is measured according to IEC62087 Edition 2.

CATEGORIES		HOME-LOVING						
SERIES		2			1			
MODEL NAME		LE265M/ LE265M-WH		LE260M	LE185M	LE180M	LE155M	LE150M
SIZE		40"	32"	32"	40"	32"	24"	24"
PICTURE	4K ULTRA HD							
	QUATTRON PRO							
	AQUOMOTION							
	3D							
SMART	PROCESSOR							
	PLATFORM							
	APP STORE							
	WEB BROWSER							
AUDIO	OUTPUT POWER	7.5W+7.5W (40") 5W+5W (32")		5W+5W	5W+5W	5W+5W	5W+5W	5W+5W (24")
	SURROUND	ORIGINAL		ORIGINAL	ORIGINAL	ORIGINAL	ORIGINAL	ORIGINAL
CONVENIENCE	COCORO EYE							
	USB PLAYBACK							
CONNECTIVITY	DIGITAL TUNER							
	MHL							
	SMART MIRRORING							
	BLUETOOTH							
	WIFI CERTIFIED							
	HDMI							
	USB	USB X1		USB X1	USB X1	USB X1 (Service only)	USB X1	
TERMINALS	POWER SUPPLY	110-240V, 50/60Hz	110-240V, 50/60Hz	110-240V, 50/60Hz	110V-240, 50/60Hz	110V-240, 50/60Hz	110-240V, 50/60Hz	110-240V, 50/60Hz
	POWER CONSUMPTION (APPROX.)	73W	46W	41W	TBD	36W	36W	36W
	DIMENSIONS WITHOUT STAND (MM) (W x H x D)	910 x 525 x 92	739 x 440 x 93	739 x 440 x 93	TBD	732 x 450 x 75	561 x 358 x 50	561 x 358 x 50
	DIMENSIONS WITH STAND (MM) (WxHxD)	910 x 571 x 206	739 x 482 x 174	739 x 482 x 174	TBD	732 x 464 x 144	561 x 391 x 178	561 x 391 x 178
	NET WEIGHT WITHOUT / WITH STAND (KG) (APPROX.)	8.3 / 9.8	5.7 / 6.5	5.7 / 6.5	TBD	4.7 / 4.9	4.5 / 5.0	4.5 / 5.0
PAGE		16		17	18		19	

Android TV, Google Cast, Google Play and other marks are trademarks of Google Inc. The Android robot is reproduced or modified from work created and shared by Google and used according to terms described in the creative commons 3.0 Attribution License.  
 \*1 The result of our laboratory testing using a test pattern with 7,680 x 4,320 pixels. The product is not using an 8K LCD panel. 8K picture (video) from an external input, cannot be played back and 8K broadcasting cannot be received. Compliance to general DVB-T/12 systems are vary across countries.

• Except protruding parts. • The HDTV logo and 1080P qualifier logo are trademarks of DIGITALEUROPE. • Dolby and the double-D symbol are registered trademarks of Dolby Laboratories. • HDMI, the HDMI logo and High-Definition Multimedia Interface are trademarks or registered trademarks or registered trademarks of HDMI Licensing LLC in the United States and other countries. • The Wi-Fi CERTIFIED Logo is a certification mark of Wi-Fi Alliance. • The Bluetooth® word mark and logos are registered trademarks owned by Bluetooth SIG Inc. and any use of such marks by Sharp is under license. • Design and specifications are current as of April 2016, but are subject to change without prior notice. • On-Mode power consumption is measured according to IEC62087 Edition 2.