

SHARP
Be Original.

SHARP ELECTRONICS (MALAYSIA) SDN. BHD. (356997-H)
No.1A, Persiaran Kuala Langat, Section 27, 40400 Shah Alam, Selangor Darul Ehsan.

Product Enquiry: 03 5102 5369
Service Enquiry: 1 800 888 678 (Toll Free)

Email: productinfo@my.sharp-world.com
Sharp Malaysia | my.sharp



SHARP
Be Original.



CAPTURES
REAL BEAUTY
AQUOS





BEYOND YOUR IMAGINATION

Gorgeous natural colours that are indistinguishable from the real thing. Stunning clarity that simply takes your breath away. AQUOS 8K technology will leave you truly captivated. Let's dive in...

This is the result of our laboratory testing using a test pattern with 7680 x 4320 pixels. This product is not using an 8K LCD panel.
External 8K video source cannot be played back and 8K broadcasting cannot be received.



THE WORLD'S FIRST 8K-UPCONVERTER



EXTRAORDINARY DETAIL

Details simply come alive with the world's first 8K-Upconverter. It features X8 Master Engine Pro that renders stunning 8K Resolution images. When enhanced with Quattron-Pro, a 4K-4 Primary Colour Panel Technology, the results are simply stunning. Pictures portray superb depth, the finest details and spectacular realism.

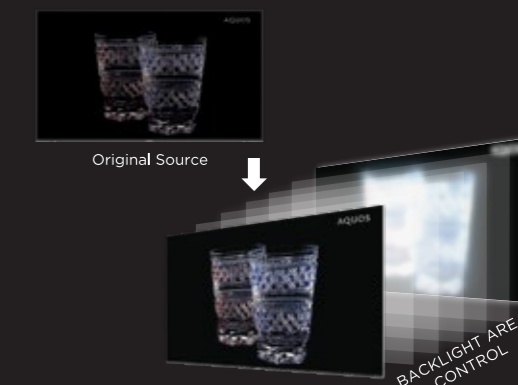
This is the result of our laboratory testing using a test pattern with 7680 x 4320 pixels. This product is not using an 8K LCD panel. External 8K video source cannot be played back and 8K broadcasting cannot be received.



RICH, VIBRANT COLOURS

See more brilliant colours in all their subtle nuances. Quattron Pro Technology adds a unique 4th yellow sub-pixel to the standard red, green and blue, resulting in a full spectrum of vivid, natural colours. Whether it is the luminous sparkle of a rain drop, or the deep, lush greenery of a forest, colours appear astonishingly richer.

Compared to our conventional model (LC-50LE275X).



SUPERIOR CONTRAST

Whether it's the shimmer of metallic colours, the glare of the sun or the glitter of lights, exceptional contrast is achieved with the Ultra Dynamic Range Pro in the TV. X8-Master Engine Pro and the direct LED backlight system make dark areas of the picture darker and light areas, brighter.



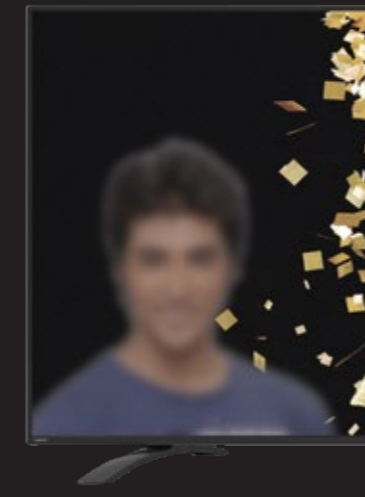
IMPRESSIVE DESIGN

Ultra-Sleek, Seamless Aluminium Frame

The sturdy, solid-loop design unifies the aluminium frame and stand, giving it a modern, edgy look.

Only applicable for LC80XU930X

DESIGNED TO DELIGHT. FEATURES THAT AMAZE.

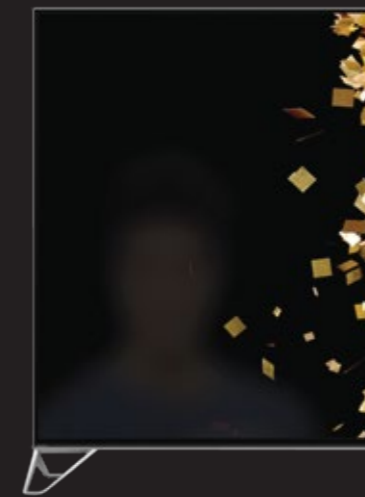


OUTSTANDING PICTURES

N-Black Panel With Low Reflection

Rich blacks are portrayed, with low reflection and clear colour reproduction for truly striking pictures.

Only applicable for LC80XU930X



HANDY CONVENIENCE

Bluetooth-enabled remote control

Intuitive and remarkably easy to use with a comfortable touch pad, this handy remote puts you in control.



DISCOVER THE 8K DIFFERENCE

DISCOVER THE 8K DIFFERENCE



80XU930X

70XU830X

XU SERIES 930X

8K Resolution with Android TV

AQUOS QUATTRON PRO – 8K EXPERIENCE

- Equivalent to 8K Resolution Panel and 8K-Upconverter
- Rich Colour Pro
- Ultra Dynamic Range Pro

ADOPT THE LATEST SMART OS

- Enjoy a variety of content without the need for other devices
- Input/output terminal supports the latest 4K standards
- Smart features can be fully utilised with touch-pad and voice-search function



XU SERIES 830X

8K Resolution with Android TV

AQUOS QUATTRON PRO – 8K EXPERIENCE

- Equivalent to 8K Resolution Panel and 8K-Upconverter
- Rich Colour Pro
- Ultra Dynamic Range Pro

ADOPT THE LATEST SMART OS

- Enjoy a variety of content without the need for other devices
- Input/output terminal supports the latest 4K standards
- Smart features can be fully utilised with touch-pad and voice-search function



KEY FEATURES:

KEY FEATURES:

This is the result of our laboratory testing using a test pattern with 7680 x 4320 pixels. This product is not using an 8K LCD panel. External 8K video source cannot be played back and 8K broadcasting cannot be received.

This is the result of our laboratory testing using a test pattern with 7680 x 4320 pixels. This product is not using an 8K LCD panel. External 8K video source cannot be played back and 8K broadcasting cannot be received.

4K U HDR



THE REAL DEAL AWAITS YOU

4K U HDR

REAL CONTRAST

Watch images come to life before your very eyes! Pictures display superb depth and exceptional contrast between light and darkness thanks to 4K UHDR technology. What's more, Comfort Luminance Display uses an LED backlight to produce extraordinary, true-to-life brightness.



REAL DETAIL

Never miss all the finest and most interesting details on your TV. A 4K Upconverter produces superior 4K quality from SD and HD sources while 4K Digital Noise Reduction keeps image quality clean. Distracting pixelation that occurs during upconversion is effectively reduced.



REAL COLOUR

Pictures literally burst with vivid, brilliant colours! Real Colour gives you a 123% wider colour palette for you to enjoy while a Colour Optimiser adjusts the colours displayed to those that are naturally detected by our eyes. A Tone Optimiser offers 64 times more colour levels.

eilex
PRISM

EILEX PRISM*

Sound that astounds! Complement beautiful pictures with awesome sound that goes beyond the norm. Eilex PRISM is the world's most sophisticated audio equalisation technology. It uses data from the entire frontal space of the TV to reproduce sound that is extremely realistic and original.

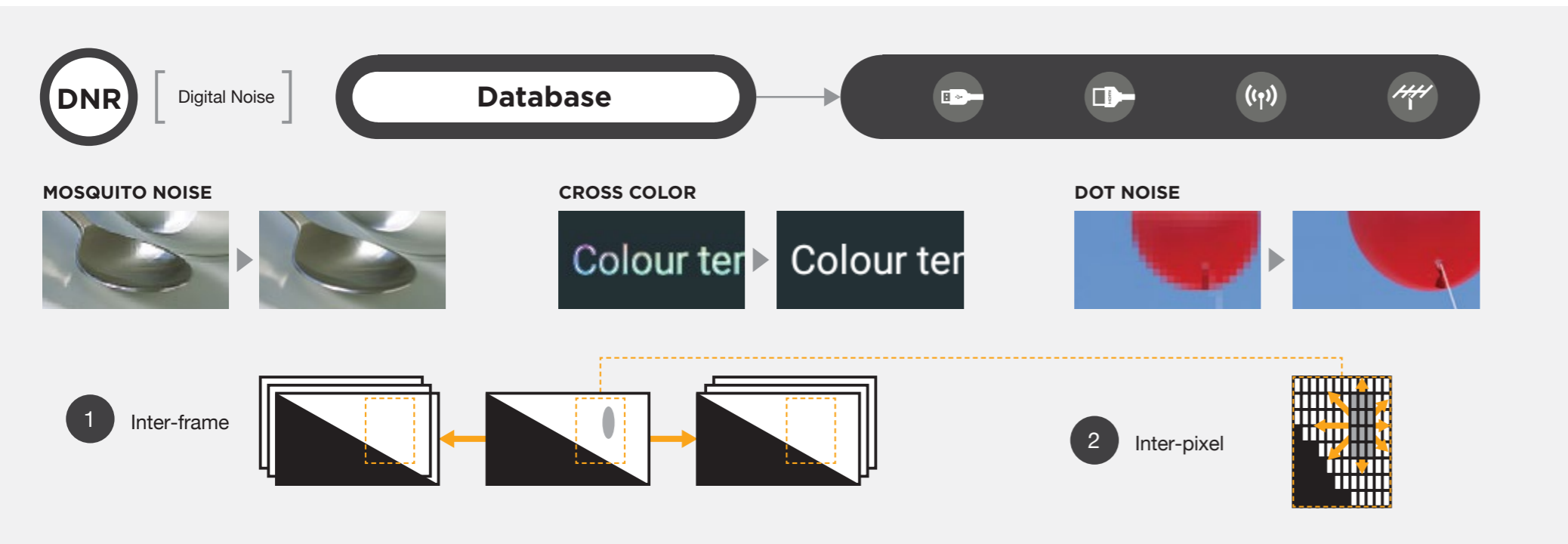
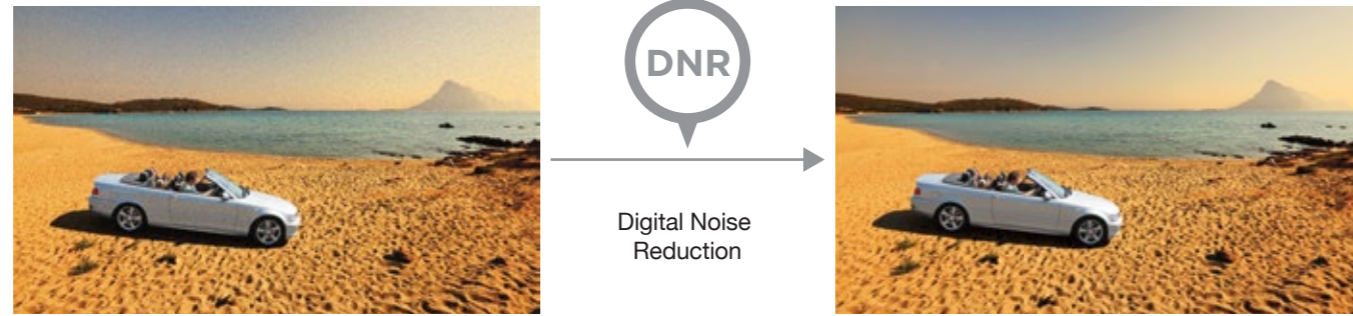
* Available for 6800 series only.

REAL DETAIL

Processing to convert SD/HD/2K video input to higher quality images

STEP 1

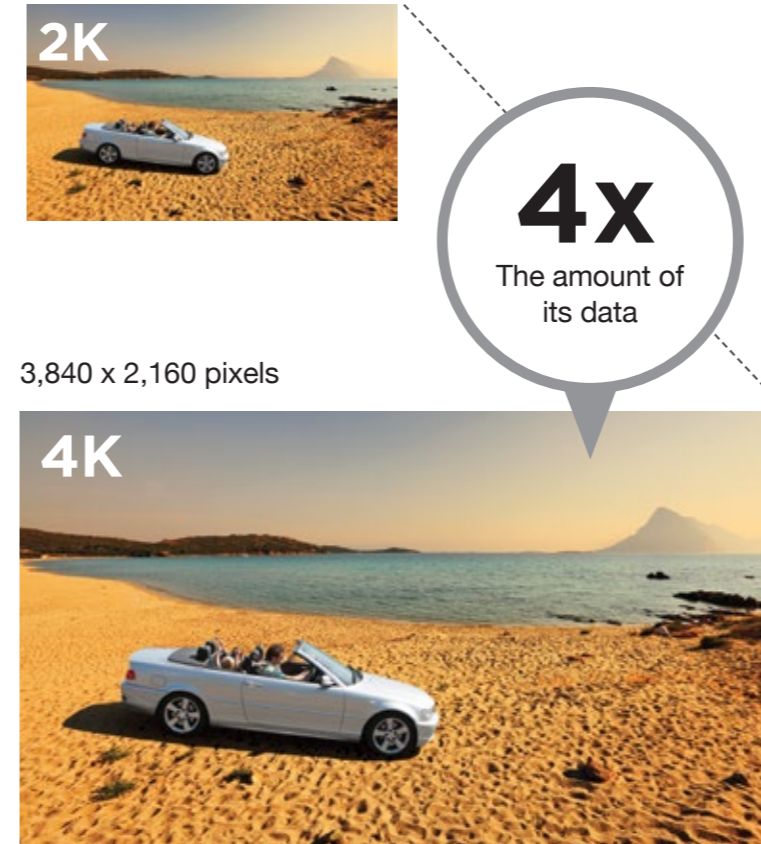
The signals of the noise itself are reduced. Noise contained in video is detected by comparing with the database.



Upconvert to 4K video

STEP 2

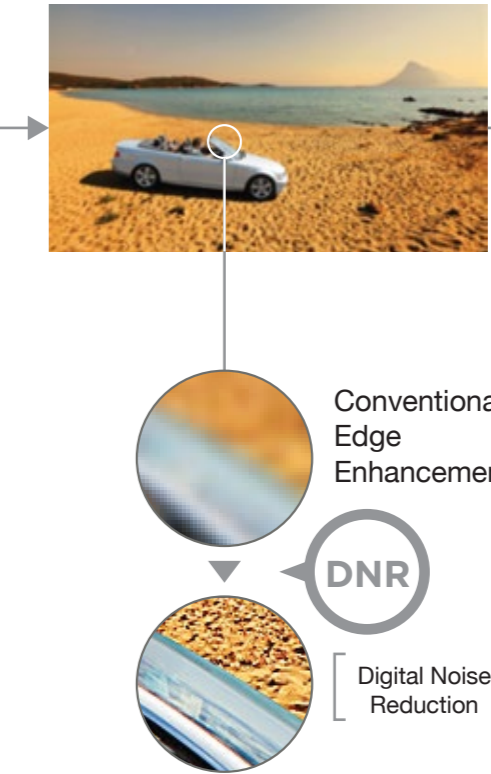
Various sources (SD/HD/2K) conversion to 4K is executed with the contour and texture information of the source video kept intact.



Conversion of 4K video images to even higher quality

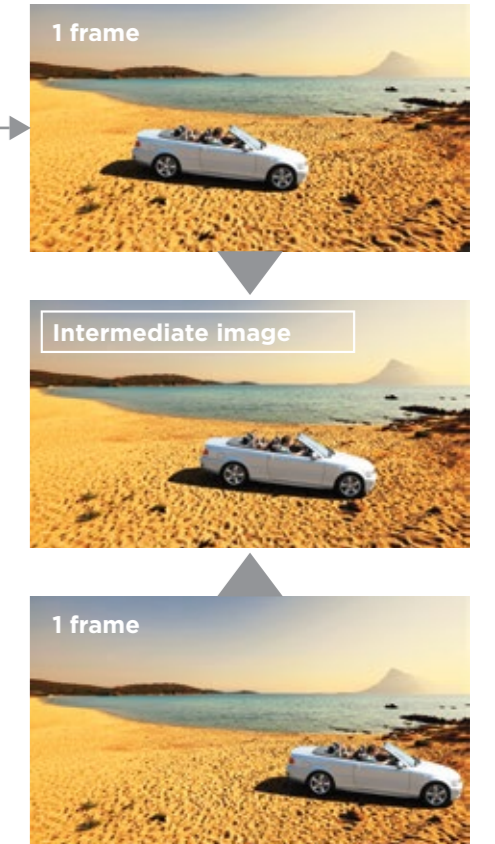
STEP 3

Video definition is improved by enhancing the contrast between detected edges and their periphery.



STEP 4

The MEMC algorithm generates an intermediate image between continuous frames to reduce blur and display a clear 4K image.



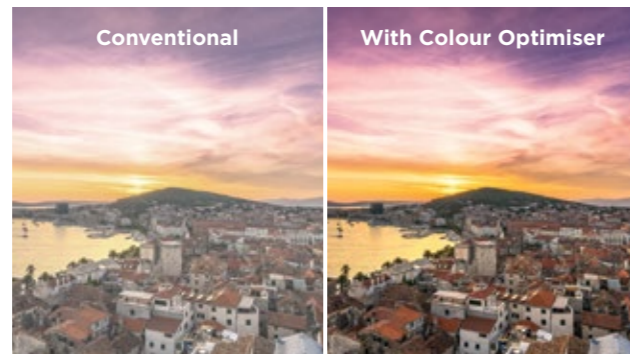
REAL COLOUR

Real Colour



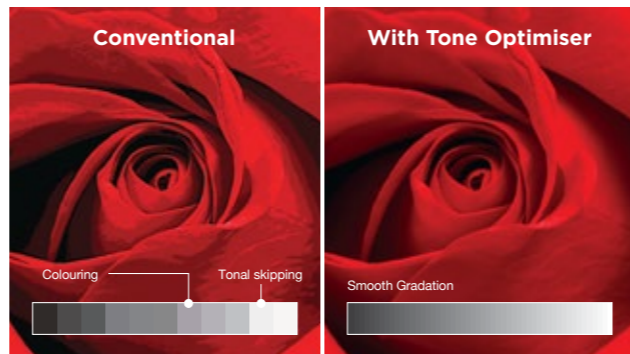
The available colour gamut has been expanded 123% over that of existing models to express colour in a more natural-looking way because of the addition of green and red phosphors to the LED backlight and a colour restoration circuit.

Colour Optimiser



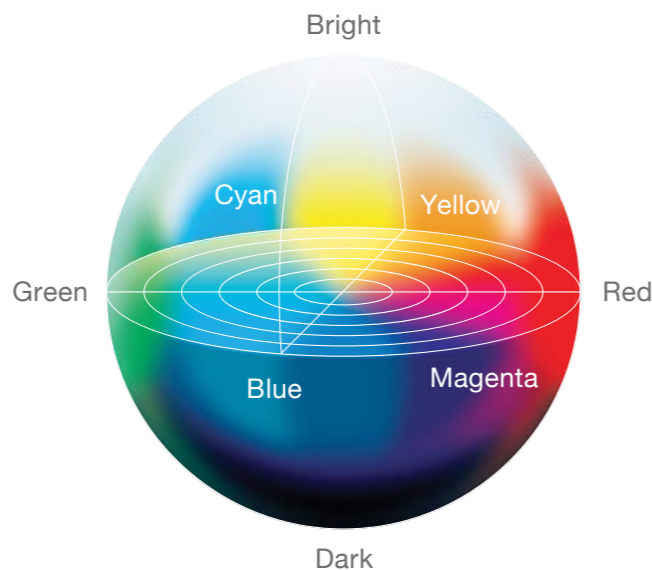
“6 axis colour management” incorporates the colours of magenta, yellow and cyan in addition to the 3 primary colours of red, green and blue. As a result, subtle tones are depicted distinctly to bring colour closer to that of nature.

Tone Optimiser



Colour representation is 64 times sharper than that of conventional processing. This results in superb expression of light and dark tones to create natural-looking pictures.

Six Axis Colour Management

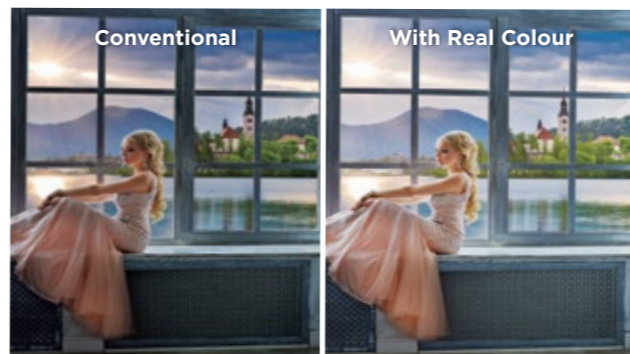


123%
vs.
Conventional

REAL CONTRAST

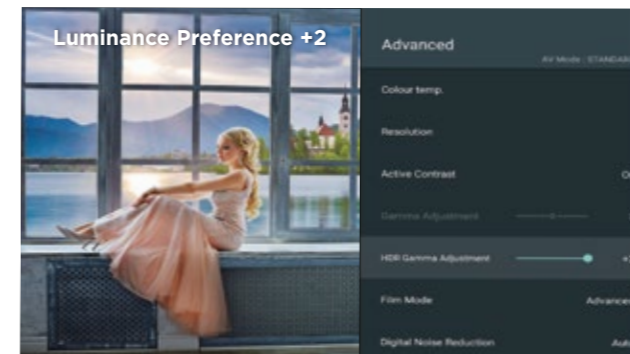
Luminance can now be reproduced over a wider range

HDR format has wider luminance info than conventional video images. The engine displays images optimally on a liquid crystal panel, resulting in pictures with a realistic look and feel to them.



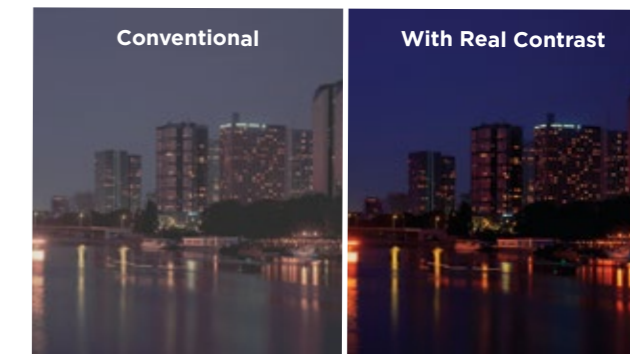
Adjustment to personal video preferences

With AQUOS, gamma curves for viewing of HDR video content can be changed without any loss in the detailed optical information held by HDR. You can choose between adjustment by “tone preference” or “luminance preference”.



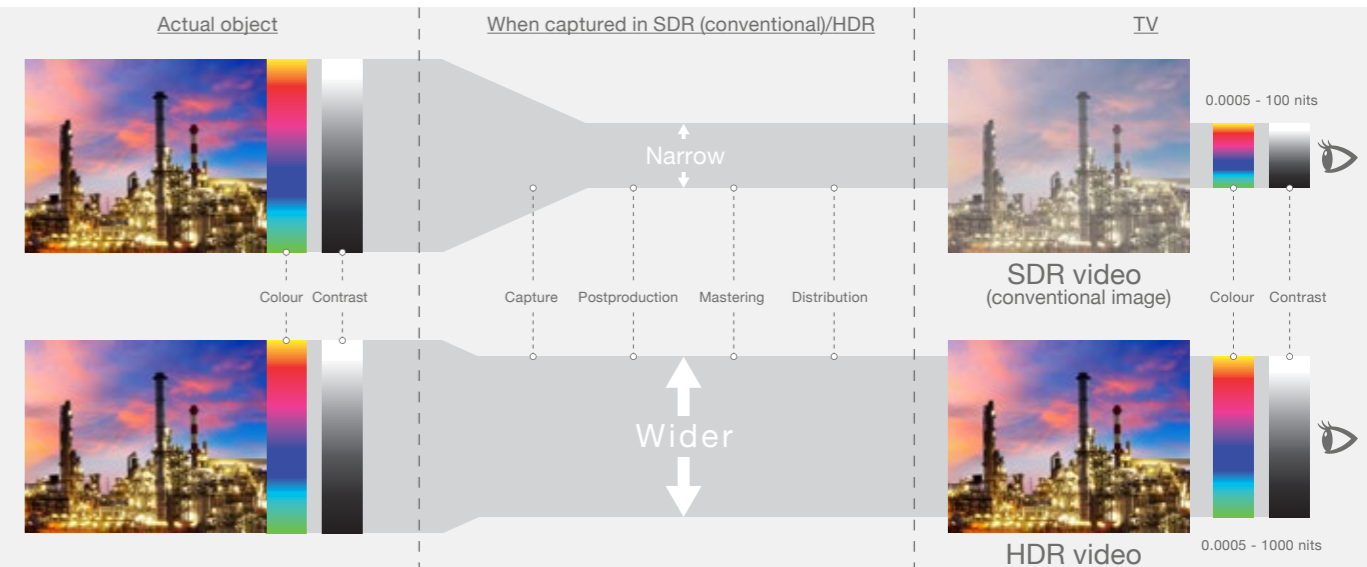
Non-HDR content (SDR) can be reproduced to have natural contrast

The Active Contrast feature detects the brightness information of the entire screen, and compares this with a brightness database to actively adjust the backlight to the optimum brightness.



What is HDR (High Dynamic Range)?

“HDR” is a technique of recording brightness information (luminance) captured by 4K HDR camera at a wider dynamic range than usual and restoring that luminance on the TV during playback.



UA6800X

60" / 50" / 45" – 4K U HDR with Android TV

Picture

- 4K UHDR (3840 x 2160)
- Real Colour / Rich Colour
- X4 Master Engine Pro II

Smart

- Android TV
- Quad Core
- Google Play
- Web browser
- YouTube
- Netflix

Audio

- Eilex Prism
- Built in surround

Convenience

- USB Multimedia Function (Photo, Video, and Music)
- Voice Search

Connectivity

- Chromecast Built-In
- Bluetooth (Remote control, Keyboard, Mouse, Gamepad)
- Wifi Ready
- HDMI
- USB



UA6500X

60" / 50" / 45" – 4K UHDR Easy Smart TV



Picture

- 4K UHDR (3840 x 2160)
- X4 Master Engine Pro II
- Rich Colour
- Aquamotion 200Hz

Smart

- Dual Core Processor
- Easy Smart TV
- Web Browser
- YouTube

Audio

- Built-In Surround
- Dolby Audio

Convenience

- USB Multimedia Function (Photo, Video, and Music)

Connectivity

- Screen Mirroring
- Built-in WiFi
- HDMI Terminal
- USB terminal

KEY FEATURES: easysmart YouTube



Browser



Screen Mirroring

AH1X NEW

50" – 4K UHDR Easy Smart TV



Pictures

- 4K UHDR (3840 x 2160)
- X4 Master Engine Pro II
- Rich Colour

Smart

- Dual Core Processor
- Easy Smart TV
- Web Browser
- YouTube

Audio

- Built-In Surround
- Dolby Audio
- Sound Reflector
- Bluetooth Music Receiver

Convenience

- USB Multimedia Function (Photo, Video, and Music)
- Azan Or Prayer Time Reminder

Connectivity

- Screen Mirroring
- Built-in WiFi
- HDMI Terminal
- USB terminal
- Bluetooth (A2DP Supported)

KEY FEATURES: easysmart YouTube



Browser



Screen Mirroring



Azan Reminder



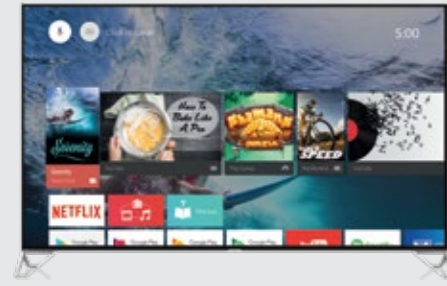
Sound Reflector



Bluetooth®

POWERED BY ANDROID TV

Extend the Boundaries of Exciting Entertainment



ALL YOUR FAVOURITE CONTENT & APPS

ANDROID TV™ brings great content, apps and Android games to your TV - all on the big, beautiful screen for maximum impact and excitement. Watch blockbuster shows, classic movies or viral videos whether from Google Play or your own apps. Plus, you can buy an endless array of your favourite content from Google Play.



BROWSE LESS, WATCH MORE

Spend more time watching your favourite programmes, and less time searching and browsing with convenient and savvy features like Personalized Recommendation that will appear automatically on your home screen, or Voice Search that will obey your every verbal prompting quickly.



GAMES & FUN GALORE

Console-style ANDROID games on your TV with a gamepad is now yours to enjoy. Immerse yourself in arcade racing, 2D side-scrollers, 3D battles, casual games or great adventures. ANDROID TV™ offers a new way to play Android games on your phone, tablet or TV, with endless possibilities.



CHROMECAST BUILT-IN CONVENIENCE

Stream your favourite entertainment and programmes from your iPhone®, iPad®, Android phone or tablet, Mac® or Windows® laptop, or Chromebook right to your TV. It's fast and easy! You can even upgrade your existing TV with a Chromecast device. Or purchase a new TV or display with Chromecast already built-in.

POWERED BY EASY SMART

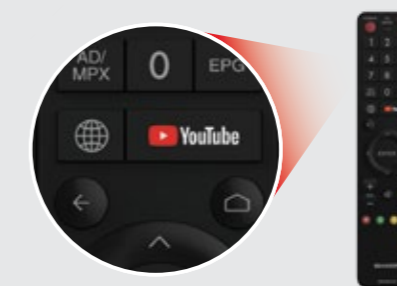
The Widest Range of Entertainment, with Two Pre-Installed Apps

easy smart



STAY UPDATED & ENTERTAINED

YouTube is the amazing door to worldwide content on every topic imaginable. With just a press of a button, you can watch all the very best internet videos. Be the first to know the latest trends from daily recommendations, or subscribe to video channels of your choice and stay constantly updated.



REMOTE CONTROL WITH BROWSER & YouTube BUTTON

Google Rules! The world's smartest search engine within our web browser is right at your fingertips for effortless searching and browsing. Just type in whatever you're looking for and Google search engine will display an abundance of matches for your enlightenment and entertainment pleasure. So easy and fun!

New remote control and user interface for AE1X and AH1X models only.



SIMPLE USER INTERFACE FOR QUICK CONNECTIONS

Searching made easy! The handy TV remote control comes with Web Browser and YouTube buttons that give you easy access to all your favourite entertainment. Movies, news, music, games... whatever you desire. A simple user interface ensures no-fuss browsing, making this platform truly both easy and smart to navigate!



VISUAL CLARITY REDEFINED

Get ready for a fully immersive viewing experience... with maximum high-definition brilliance that will transport you to another world. Enjoy. Explore. Exclaim! And experience stunning picture clarity that will leave you simply spellbound.



LE580X / BK*

60" / 50" – Full HD with Android TV
(*BK Series – 50" Only)

Picture

- Full HD Resolution (1920 x 1080)
- X2 Master Engine Pro
- Wide Colour

Smart

- Android TV
- Quad Core Processor
- Google Play Store
- Youtube

Audio

- Dolby Audio
- Surround

Convenience

- USB Multimedia Function (Photo, Video, and Music)
- SD Card Input (SDHC)
- Voice Search

Connectivity

- Built-In WiFi and Bluetooth
- HDMI Terminal
- Chromecast Built-In



KEY FEATURES:     



SA5500X **NEW**

60" / 50" / 40" – Full HD EasySmart TV

Picture

- Full HD Resolution 1920 x 1080
- Aquomotion Lite 220Hz
- Wide Colour
- X2 Master Engine

Smart

- Easy Smart TV
- Dual Core Processor
- Web Browser
- YouTube

Audio

- Built-In Surround
- Dolby Audio

Convenience

- USB Multimedia Function (Photo, Music & Video)

Connectivity

- Screen Mirroring
- Built-in WiFi
- HDMI Terminal
- USB



AE1X **NEW**

50" / 45" – Full HD EasySmart TV

Picture

- Full HD Resolution 1920 x 1080
- Aquomotion Lite 220Hz
- Wide Colour
- X2 Master Engine

Smart

- Easy Smart TV
- Dual Core Processor
- Web Browser
- YouTube

Audio

- Built-In Surround
- Dolby Audio
- Sound Reflector
- Bluetooth Music Receiver

Convenience

- USB Multimedia Function (Photo, Music & Video)
- Mirroring
- Azan Or Prayer Time Reminder

Connectivity

- Screen Mirroring
- Built-in WiFi
- HDMI Terminal
- Bluetooth (A2DP Supported)
- USB



SA5200X **NEW**

50" / 40" – Full HD Digital

Picture

- Full HD Resolution 1920 x 1080
- X2 Master Engine
- Super Eco Mode
- Comfort Mode
- Wide Colour
- Aquomotion 200Hz
- Dual Core Processor

Audio

- New Front Speaker Design
- Built-In Surround
- Dolby Audio

Convenience

- USB Multimedia Function (Photo, Music & Video)

Connectivity

- HDMI Terminal
- USB
- Digital Broadcasting (DVB-T2)



AD1X **NEW**

50" / 45" – Full HD Digital

Picture

- Full HD Resolution 1920 x 1080
- X2 Master Engine
- Aquomotion Lite 220Hz
- Wide Colour

Audio

- New Front Speaker Design
- Built-In Surround
- Dolby Audio
- Sound Reflector

Convenience

- USB Multimedia Function (Photo, Music & Video)

Connectivity

- HDMI Terminal
- USB
- Digital Broadcasting (DVB-T2)





SA5100M **NEW**

40" – Full HD Analog

Picture

- Full HD Resolution 1920 x 1080
- X2 Master Engine
- LED Panel
- Super Eco Mode
- Wide Colour

Audio

- 7.5W x 2
- Original Surround

Convenience

- USB Multimedia Function (Photo, Video, and Music)
- Photo Frame Mode

Connectivity

- HDMI Terminal
- USB



KEY FEATURES:



LE185M

40" – Full HD Analog TV / 32" – HD Ready Analog TV

40"

Picture

- Full HD Resolution 1920 x 1080
- LED Panel
- Eagle View
- Super Eco Mode
- Aquomotion Lite 200Hz
- Easy Colour Adjustment

Audio

- Sound Reflector
- Surround Sound Technology

Convenience

- USB Multimedia Function (Photo, Music & Video)
- Photo Frame Mode

Connectivity

- HDMI Terminal
- USB Terminal
- Mobile High-Definition Link (MHL)
- Antenna Booster

32"

- HD Ready 1366x768
- Sound Reflector Design
- Super Eco Mode
- USB Media Player
- HDMI



LE180M

32" – HD Ready Analog TV

Picture

- HD Ready 1366 x 768

Audio

- Sound Reflector
- Super Eco Mode



BE DELIGHTFULLY ENTERTAINED

Wonderfully engaging. Marvellously entertaining. Our line-up features high-definition expressions at their very best. Beautiful colours. Amazing sounds. Discover them now...



SA4500X **NEW**

32" – HD EasySmart TV

Picture

- HD Ready 1366 x 768
- Aquomotion Lite 200/240Hz
- X2 Master Engine Pro
- Wide Colour

Smart

- Easy Smart TV
- Dual Core Processor
- YouTube
- Web Browser

Audio

- Dolby Audio
- New Front Speaker Design

Convenience

- USB Multimedia Function (Photo, Video, & Music)

Connectivity

- HDMI Terminal
- Built-in WiFi
- USB
- Screen Mirroring



SA4200X **NEW**

32" – HD Ready Digital TV

Picture

- HD Ready 1366 x 768
- X2 Master Engine
- Aquomotion 200Hz
- Wide Colour
- Comfort Mode

Audio

- New Front Speaker Design
- Dolby Audio

Convenience

- Super Eco Mode
- USB Multimedia Function (Photo, Video, and Music)

Connectivity

- HDMI Terminal
- USB
- Digital Broadcasting (DVB-T2)



SOUND BAR HOME THEATRE SYSTEM

FOR AN IMMERSIVE AUDIO EXPERIENCE!

Sharp's sensational range of sound bar systems delivers amazing 3D surround sound for your large TV. It offers impressive audio quality with various features such as 2.1ch sound with Dolby decoding, Bluetooth connectivity and a powerful wireless subwoofer. Enjoy maximum audio impact and complete your 3D home theatre experience with these sleek and savvy sound bars.



HT-SB603 MK II Sound Bar

Sound Technology

- Total output power : RMS 310W (80W/ch + 150W), 2.1ch
- Supports 4K video format pass through via HDMI
- High performance audio output
- Wireless active subwoofer

Convenience And Connectivity

- Remote control with built-up in LCD display
- Bluetooth for wireless audio connection
- Simple cable connection through HDMI (Audio Return Channel)
- Easy set up sound bar with wireless subwoofer
- USB charging port
- Input terminal : HDMI 2 Inputs / 1 Out (ARC); Optical In x 1, Audio In x 1

Music Enjoyment

- USB playback
- 3D Audio (3D Sound Solution)
- Music streaming via Bluetooth wireless technology with One Touch NFC connect

Dimensions (W x H x D)

- Sound bar (mm) : 1386 x 74 x 68
- Subwoofer (mm) : 144 x 432 x 306

Specifications

- Power source : AC 100-240V, 50/60Hz
- Output power : Total RMS 310W (80W/ch + 150W)

Design And Outlook

- Color / material : black
- Sound bar matching LCD TVs 60" and above
- Slim profile



HT-SB110 2.0ch Sound Bar

Sound Technology

- Total output power : RMS 30W (15W / ch)
- Powerful sound

Convenience And Connectivity

- Bluetooth wireless streaming
- Simple cable connection through HDMI (ARC-CEC)
- Easy set up
- Input terminal : HDMI, Optical In, Aux In

Music Enjoyment

- Music streaming via wireless bluetooth

Dimensions (W x H x D)

- 800mm x 60mm x 60mm

Specifications

- Power source : AC 100-240V, 50/60Hz
- Total RMS 30W (15W/ch)

Design And Outlook

- Metal grill finishing
- Slim and lightweight at just 1.3kg
- Perfect fit for Sharp LCD TV 40in and above



CP-SW60A1 Bluetooth Wireless Subwoofer

Sound Technology

- Total output power : RMS 60W
- Powerful bass

Convenience And Connectivity

- Wireless active subwoofer
- Wireless connectivity via Bluetooth
- Wireless connection to TV
- Free setting and easy set up
- Input terminal : HDMI
- Pairing key (SW Link)
- Volume control

Dimensions (W x H x D)

- 144mm x 432mm x 306mm

Specifications

- Power source : AC 100-240V, 50/60Hz
- Total RMS 60W

Design And Outlook

- Slim upright profile





ELEGANT DESIGN. EXTRAORDINARY SOUND.

Elegant and sophisticated in design with a solid wood finishing, this small, one-box Hi-Fi wonder fits perfectly into any modern home and is ideal for serious music lovers. The mini sound system generates high quality audio with 50W RMS output power, and comes equipped with Bluetooth connection, DAB+Tuner and wireless streaming of music to satisfy even the most discerning audiophiles.



SHARP ONE-BOX AUDIO SYSTEM - XLBB20D

Sound Technology

- High performance audio output
- Digital amplifier with 50W RMS output power
- Bass and treble controls

Convenience And Connectivity

- Wireless headphone via Bluetooth connection for personal listening
- Easy set-up with 1-box solution compared to 3-piece micro system
- USB charging port
- Clock and timer

Music Enjoyment

- CD player
- Bluetooth for wireless audio connection
- Portable player connection via USB and 3.5mm audio input
- Headphone link: wireless connection to Bluetooth headphone

Dimensions (W x H x D)

- Main unit: 420mm x 120mm x 257mm

Specifications

- Power source: AC 100-240V, 50/60Hz
- Output power: total RMS 50W (25W/ch)
- Tuner frequency: FM87.5 - 108.0MHz

Design And Outlook

- Color: dark oak and natural oak
- Material: solid wood

PS-920 Speaker System

Sound Technology

- 2.1ch sound
- Clear and powerful speaker output

Convenience

- Bluetooth / USB / audio in / guitar in connection / microphone in connection
- Easy set-up
- USB charging port

Music Enjoyment

- Bluetooth for wireless audio connection
- Karaoke microphone x 1
- LED light with 3 modes: constant / flash / music
- FM PLL radio signal

Specifications

Power Source	AC 110-240V, 50/60Hz DC 12V, 4Ah Rechargeable Battery
Power Consumption	Power on: 14W
Dimensions (W x H x D)	259mm x 595mm x 260mm
Weight	7.3kg
Output Power	PMPO: 160W Front Speaker MPO: 52W (26W + 26W) RMS: 44W (22W + 22W) (10% T.H.D.) RMS: 32W (16W + 16W) (1% T.H.D.)
Input Terminal	AUDIO IN (Audio signal): 750mV/47k ohms MIC: 600 +/- 30ohms (ø 6.3)
Type	2-Way Speaker System 17.2cm Woofer 5cm Soft Dome
Bluetooth Frequency Band	2.400GHz - 2.480GHz
Compatible Bluetooth Profile	A2DP (Advanced Audio Distribution Profile), AVRCP (Audio/Video Remote Control Profile) Bluetooth 2.1 + EDR
Impedance	3Ω



PS-920
Speaker System



The life of the party

Liven up your house parties, special gigs and outdoor gatherings with this powerful one-box speaker system infused with snazzy running LED club-style lights. A 5-hour battery storage* keeps the excitement going, going, going! This powerful speaker system is also Bluetooth-enabled and equipped with a convenient charging port and a USB output for audio data reading.

* Battery capacity may differ according to usage.



7 SHIELDS PROTECTION

All SHARP products pass strict Japanese quality standards. SHARP TVs are proven to have safe protection and high endurance under various circumstances. Now you can enjoy your viewing experience from a quality TV that is protected by 7 Shields.



LIGHTNING SHIELD

Varistor protects the product from lightning surges through AC cable that are in line with EMC standard (IEC 61000-4-2 & IEC 61000-4-5)



HEAVY WEIGHT SHIELD

The design of our wall mounting brackets are tested against IEC 60065 weight loading standards



VOLTAGE SHIELD

Safe product operation is ensured throughout, as our TVs can handle more than standard voltage (110V – 240V)



DROP SHIELD

The protective performance of our packaging and the durability of SHARP LED TVs are proven by passing strict drop tests



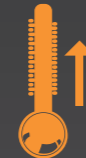
STABILITY SHIELD

Our proven structural stability has been benchmarked against IEC 60065 standards



VIBRATION SHIELD

Our quality carton packing design and high build quality of SHARP LED TVs are proven to be vibration resistant during delivery



HIGH TEMPERATURE & HUMIDITY SHIELD

Reliable SHARP LED TVs are proven and tested based on IEC 60065 standards to withstand high temperature and humidity settings

FIRST YEAR ALL-RISK INSURANCE COVERAGE*

Enjoy Peace Of Mind With First Year All-Risk Insurance Sharp Malaysia provides All-Risk Insurance Coverage for 45" SHARP AQUOS TV and above only. This is an extra benefit on top of the standard 2 years warranty period.

* Terms and conditions apply. For TV models 45" and above. All-risk insurance is undertaken by third party insurer and is subject to their approval.

Sharp AQUOS TVs are made in Malaysia with Japan quality assurance.



FIRE



ACCIDENTAL DAMAGE



LIGHTNING



FLOOD



THEFT (FORCE ENTRY)

SPECIFICATIONS

CATEGORIES	PREMIUM		ADVANCED							
	XU930X	XU830X	UA6800X			UA6500X			AH1X (NEW)	
MODEL NAME	XU930X	XU830X	UA6800X			UA6500X			AH1X (NEW)	
SIZE	80"	70"	60"	50"	45"	60"	50"	45"	50"	
PICTURE	TV RESOLUTION	8K RESOLUTION		4K ULTRA HD			4K ULTRA HD			4K ULTRA HD
	COLOUR TECHNOLOGY	QUATTRON PRO		RICH COLOUR			RICH COLOUR			RICH COLOUR
	ENGINE	X8 MASTER ENGINE PRO		X4 MASTER ENGINE PRO II			X4 MASTER ENGINE PRO II			X4 MASTER ENGINE PRO II
	UDR / HDR	UDR		HDR 10			HDR 10			HDR 10
	AQUOMOTION	1200HZ		-			200HZ			200HZ
SMART	PROCESSOR	QUAD CORE		QUAD CORE			DUAL CORE			QUAD CORE
	SMART PLATFORM	ANDROID TV		ANDROID TV			EASY SMART			EASY SMART
	APP STORE	GOOGLE PLAY		GOOGLE PLAY			-			-
	WEB BROWSER	DOWNLOADABLE		DOWNLOADABLE			BUILT-IN			BUILT-IN
	VOICE INTERACTION	VOICE SEARCH		VOICE SEARCH			-			-
AUDIO	OUTPUT POWER	10W x 2 + 15W (SUBWOOFER)		10W x 2			10W x 2			10W x 2
	SURROUND	DOLBY DIGITAL PLUS		DOLBY AUDIO WITH EILEX PRISM			DOLBY AUDIO			DOLBY AUDIO
CONNECTIVITY	HDMI	4 (SIDE)		3 (SIDE), 1 (REAR)			2 (SIDE)			2 (SIDE)
	USB	1 (SIDE), 2 (REAR) (USB3.0 x 1)		(USB3.0 x 1)	1 (SIDE), 1 (REAR)		1 (SIDE)			1 (SIDE)
	MIRRORING	CHROMECAST BUILT-IN		CHROMECAST BUILT-IN			SCREEN MIRRORING			SCREEN MIRRORING
	BLUETOOTH	BUILT-IN		BUILT-IN			-			BUILT-IN
	WIFI	BUILT-IN		BUILT-IN			BUILT-IN			BUILT-IN
OTHERS	POWER CONSUMPTION	454W	359W	196W	151W	162W	192W	141W	148W	140W
	DIMENSIONS WITHOUT STAND (MM) (W x H x D)	1809 x 1049 x 106	1564 x 910 x 91	1355 x 791 x 86	1125 x 662 x 67	1019 x 592 x 67	1355 x 791 x 86	1125 x 662 x 67	1019 x 592 x 67	1122 x 666 x 74
	DIMENSIONS WITH STAND (MM) (W x H x D)	1809 x 1139 x 428	1564 x 989 x 361	1355 x 856 x 379	1125 x 711 x 231	1019 x 641 x 231	1355 x 856 x 379	1125 x 711 x 231	1019 x 641 x 231	1122 x 708 x 253

Android TV, Google Cast, Google Play and other marks are trademarks of Google Inc. The Android robot is reproduced or modified from work created and shared by Google and used according to terms described in the creative commons 3.0 Attribution License. *1 The result of our laboratory testing using a test pattern with 7,680 x 4,320 pixels. The product is not using an 8K LCD panel. 8K picture (video) from an external input, cannot be played back and 8K broadcasting cannot be received. Compliance to general DVB-T/T2 systems vary across countries.

SPECIFICATIONS

	CATEGORIES	STANDARD										
	MODEL NAME	LE580/BK		SA5500X (NEW)			AE1X (NEW)		SA5200X (NEW)			
	SIZE	60"	50"	60"	50"	40"	50"	45"	50"	40"		
PICTURE	TV RESOLUTION	FULL HD			FULL HD			FULL HD		FULL HD		
	COLOUR TECHNOLOGY	WIDE COLOUR			WIDE COLOUR			WIDE COLOUR		WIDE COLOUR		
	ENGINE	X2 MASTER ENGINE PRO			X2 MASTER ENGINE PRO			X2 MASTER ENGINE PRO		X2 MASTER ENGINE		
	UDR / HDR	-			-			-		-		
	AQUOMOTION	-			200HZ			200HZ		200HZ		
	SMART	PROCESSOR	QUAD CORE			DUAL CORE			DUAL CORE		-	
SMART PLATFORM		ANDROID TV			EASY SMART			EASY SMART		-		
APP STORE		GOOGLE PLAY			-			-		-		
WEB BROWSER		DOWNLOADABLE			BUILT-IN			BUILT-IN		-		
VOICE INTERACTION		Voice Search			-			-		-		
AUDIO		OUTPUT POWER	10W x 2		10W x 2			10W x 2		10W x 2	7.5W x 2	
	SURROUND	DOLBY DIGITAL PLUS			DOLBY AUDIO			DOLBY AUDIO		DOLBY AUDIO		
CONNECTIVITY	HDMI	4 (SIDE)			2 (SIDE)			2 (SIDE)		2 (SIDE)		
	USB	1 (SIDE), 1 (REAR) (USB3.0 x 1)			1 (SIDE)			1 (SIDE)		1 (SIDE)		
	MIRRORING	CHROMECAST BUILT-IN			SCREEN MIRRORING			SCREEN MIRRORING		-		
	BLUETOOTH	BUILT-IN			-			BUILT-IN		-		
	WIFI	BUILT-IN			BUILT-IN			BUILT-IN		-		
OTHERS	POWER CONSUMPTION	147W	116W	144W	116W	80W	109W	101W	115W	78W		
	DIMENSIONS WITHOUT STAND (MM) (W x H x D)	1355 x 791 x 86	1125 x 662 x 67	1355 x 791 x 86	1125 x 662 x 67	911 x 567 x 75	1122 x 666 x 74	1014 x 581 x 64	1125 x 662 x 67	911 x 567 x 75		
	DIMENSIONS WITH STAND (MM) (W x H x D)	1355 x 823 x 303	1125 x 684 x 255	1355 x 856 x 397	1125 x 711 x 231	911 x 633 x 239	1122 x 708 x 253	1014 x 622 x 230	1125 x 711 x 231	911 x 633 x 239		

• Except protruding parts. • The HDTV logo and 1080P qualifier logo are trademarks of DIGITALEUROPE. • Dolby and the double-D symbol are registered trademarks of Dolby Laboratories. • HDMI, the HDMI logo and High-Definition Multimedia Interface are trademarks or registered trademarks of HDMI Licensing LLC in the United States and other countries. • The Wi-Fi CERTIFIED Logo is a certification mark of Wi-Fi Alliance. • The Bluetooth word mark and logo are registered trademarks owned by Bluetooth SIG Inc. and any use of such marks by SHARP is under license. • Design and specifications are current as of July 2018, but are subject to change without prior notice. • On-Mode power consumption is measured according to IEC62087 Edition 2.

	CATEGORIES	STANDARD							
	MODEL NAME	AD1X (NEW)		SA5100M (NEW)	LE185M		LE180M	SA4500X (NEW)	SA4200X (NEW)
	SIZE	50"	45"	40"	40"	32"	32"	32"	32"
PICTURE	TV RESOLUTION	FULL HD		FULL HD	FULL HD	HD READY	HD READY	HD READY	HD READY
	COLOUR TECHNOLOGY	WIDE COLOUR		WIDE COLOUR	-		-	WIDE COLOUR	WIDE COLOUR
	ENGINE	X2 MASTER ENGINE		X2 MASTER ENGINE	-		-	X2 MASTER ENGINE PRO	X2 MASTER ENGINE
	UDR / HDR	-		-	-		-	-	-
	AQUOMOTION	-		-	-		-	200HZ	200HZ
	SMART	PROCESSOR	-		-	-		-	DUAL CORE
SMART PLATFORM		-		-	-		-	EASY SMART	-
APP STORE		-		-	-		-	-	-
WEB BROWSER		-		-	-		-	BUILT-IN	-
VOICE INTERACTION		-		-	-		-	-	-
AUDIO		OUTPUT POWER	10W x 2	10W x 2	7.5W x 2	5W x 2		5W x 2	7.5W x 2
	SURROUND	DOLBY AUDIO		ORIGINAL	SOUND REFLECTOR		SOUND REFLECTOR	DOLBY AUDIO	DOLBY AUDIO
CONNECTIVITY	HDMI	2 (SIDE)		2 (SIDE)	1 (SIDE)		1 (SIDE)	2 (SIDE)	2 (SIDE)
	USB	1 (SIDE)		1 (SIDE)	1 (SIDE)	1 (SIDE)	-	1 (SIDE)	1 (SIDE)
	MIRRORING	-		-	-		-	SCREEN MIRRORING	-
	BLUETOOTH	-		-	-		-	-	-
	WIFI	-		-	-		-	BUILT-IN	-
OTHERS	POWER CONSUMPTION	107W	100W	76W	62W	36W	36W	47W	44W
	DIMENSIONS WITHOUT STAND (MM) (W x H x D)	1122 x 666 x 74	1014 x 581 x 64	911 x 567 x 75	905 x 538 x 78	732 x 450 x 75	732 x 450 x 75	731 x 466 x 75	731 x 466 x 75
	DIMENSIONS WITH STAND (MM) (W x H x D)	1122 x 708 x 253	1014 x 622 x 230	911 x 633 x 239	905 x 560 x 178	732 x 464 x 144	732 x 464 x 144	731 x 519 x 195	731 x 519 x 195

• Except protruding parts. • The HDTV logo and 1080P qualifier logo are trademarks of DIGITALEUROPE. • Dolby and the double-D symbol are registered trademarks of Dolby Laboratories. • HDMI, the HDMI logo and High-Definition Multimedia Interface are trademarks or registered trademarks of HDMI Licensing LLC in the United States and other countries. • The Wi-Fi CERTIFIED Logo is a certification mark of Wi-Fi Alliance. • The Bluetooth word mark and logo are registered trademarks owned by Bluetooth SIG Inc. and any use of such marks by SHARP is under license. • Design and specifications are current as of July 2018, but are subject to change without prior notice. • On-Mode power consumption is measured according to IEC62087 Edition 2.